

Chandran Femoral Neck Retractor with Sharp Teeth

Designed by Rama Chandran, MD

Designed to grasp and expose the femoral neck, the teeth help prevent the retractor from slipping or shifting under downward pressure

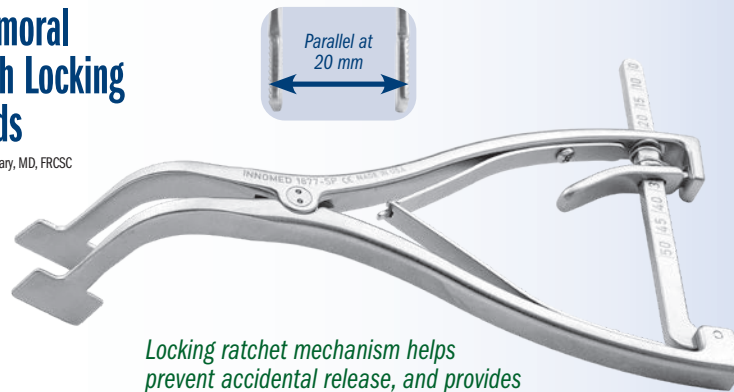
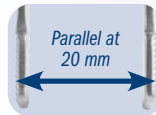
PRODUCT NO:
6141
Overall Length: 14.25" (36,2 cm)
Blade width at End: 1.25" (3,2 cm)
Prong Length: 1" (2,54 cm)



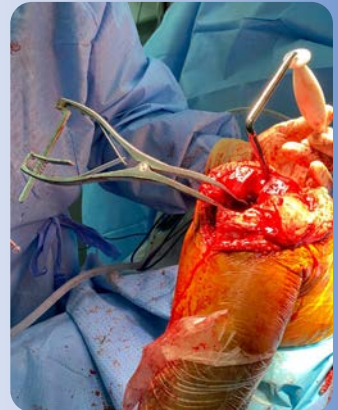
Lombardi Gap Balancing Femoral Tibial Spreader – Small with Locking Mechanism and Smooth Pads

Original designed by Adolph V. Lombardi Jr., MD, modified by Mojib Manzary, MD, FRCS

Designed to help separate the femur and tibia during total knee procedures, with the pads being parallel when measured at 20 mm of separation



Locking ratchet mechanism helps prevent accidental release, and provides for controlled adjustment and easy release.



PRODUCT NO:
1877-SP
Overall Length: 7" (17,8 cm)
Pads: 22 mm x 13 mm
Opens to: 35 mm



40 mm deeper than our standard version

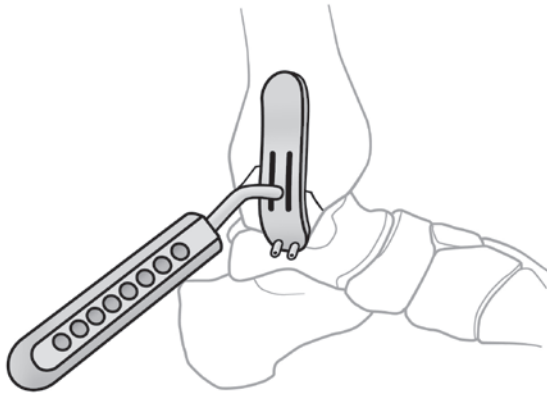
Browne Deltoid Retractors

Used for the Delto-Pectoral approach, the retractor contours the humeral head with effortless deltoid retraction allowing extensive exposure

The small deep version is designed for use in large patients.

PRODUCT NO:
1670-01D [Small Deep]
Blade Width: 45 mm
Overall Length: 12.25" (31,1 cm)





Medial Malleolus Fracture Reduction Aid

Designed by Christopher Blair, DO

Designed to hook under the medial malleolus to help reduce the medial malleolus fragment while two K-wire guides supply trajectory for wires

For K-wires up to 1,6 mm (.062")

PRODUCT NO:
3664
Overall Length: 7" (17,8 cm)
Handle Length: 4" (10,2 cm)
Plate Width: .8" (2 cm)
Plate Length: 3" (7,6 cm)
Guide Tube Length: 6 mm

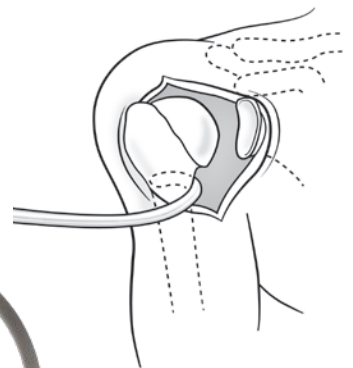
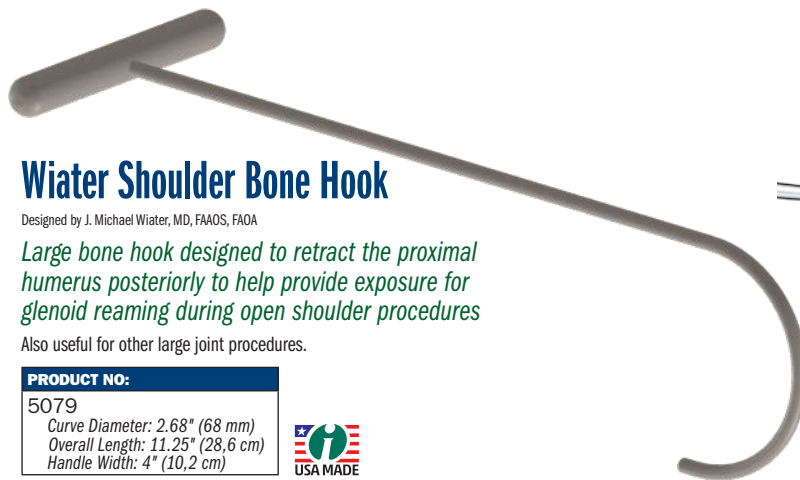
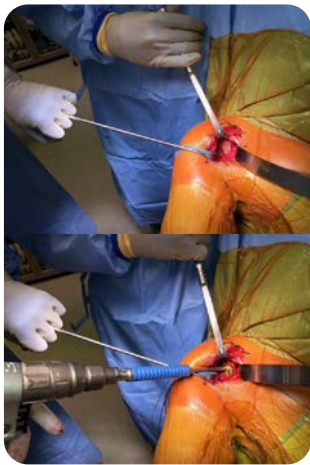


Ortho Mini Chisels

Mini orthopedic chisels, straight and offset, with straight and ergonomic handles



PRODUCT NO'S:	
Offset Chisels	Straight Chisels
1169-1 [1 mm Offset Chisel] Overall Length: 6.25" (15,9 cm) Chisel Width: 1 mm	1170-3 [3 mm Straight Chisel] Overall Length: 6.4" (16,3 cm) Chisel Width: 3 mm
1169-2 [2 mm Offset Chisel] Overall Length: 6.25" (15,9 cm) Chisel Width: 2 mm	1170-4 [4 mm Straight Chisel] Overall Length: 6.4" (16,3 cm) Gouge Width: 4 mm
1169-3 [3 mm Offset Chisel] Overall Length: 6.25" (15,9 cm) Chisel Width: 3 mm	1170-5 [5 mm Straight Chisel] Overall Length: 6.4" (16,3 cm) Gouge Width: 5 mm
1169-4 [4 mm Offset Chisel] Overall Length: 6.25" (15,9 cm) Chisel Width: 4 mm	MADE EXCLUSIVELY FOR INNOMED IN GERMANY
1169-5 [5 mm Offset Chisel] Overall Length: 6.25" (15,9 cm) Chisel Width: 5 mm	



Wiater Shoulder Bone Hook

Designed by J. Michael Wiater, MD, FAAOS, FAOA

Large bone hook designed to retract the proximal humerus posteriorly to help provide exposure for glenoid reaming during open shoulder procedures

Also useful for other large joint procedures.

PRODUCT NO:
5079
Curve Diameter: 2.68" (68 mm)
Overall Length: 11.25" (28,6 cm)
Handle Width: 4" (10,2 cm)



© 2021 Innomed, Inc.

Innomed, Inc
103 Estus Drive
Savannah, GA 31404
USA

Tel 912.236.0000
Fax 912.236.7766
www.innomed.net
info@innomed.net

Innomed-Europe LLC
Alte Steinhäuserstrasse 19
CH-6330 Cham, Switzerland
Tel 0041 (0) 41 740 67 74
Fax 0041 (0) 41 740 67 71

www.innomed-europe.com
info@innomed-europe.com
contact.france@innomed-europe.com

Innomed-Europe GmbH
c/o Emons Logistik GmbH
In Rammelswiesen 9 D-78056
Villingen-Schwenningen
Deutschland

Tel 0049 (0) 7720 46110 60
Fax 0049 (0) 7720 46110 61
www.innomed-europe.com
info@innomed-europe.com